

# Undersea Centre Ltd

SERVING THE DIVING INDUSTRY SINCE 1974

Info@undersea-centre.com www.undersea-centre.com 023 8235 8111



## 6000-PM & 6000-PMO Installation Instructions

This valve is designed to be panel mounted and will require a 28 mm hole + 2 x 6mm Holes.

This will make it easy to service at a later date.

These instructions are supplementary to the additional sheet supplied. **Both must be read.**

This allows you to service this valve from the front of the panel rather than having to remove the complete panel.

Follow the drawing below.

It is important that you countersink the 6mm holes so that the screw head is flush with the panel surface. This is important so that they do not prevent the large washer from coming into contact with the panel.

The washer is just designed to cover the 28mm, so do not over tighten the hexagon nut.

When you need to remove the shaft housing it is recommended that you use our special tool. Part No: 6000-TL.

This require a 1/2" / 12mm Square drive when re-assembling

You should use a Torque Wrench and tighten to 60 N.m or 45 Lb.Ft.

Using a spanner will likely damage the housing.

If you are a panel builder, we can supply a metal jig to enable you to mark accurately the position of the 6mm holes.

Please enquire for availability.

Any questions? Feel free to contact us.

To see the full range of our products please visit our website. You may also email us direct from this site.

**Undersea Centre Ltd, 3 The Crosshouse Centre, Crosshouse Road, Southampton, SO14 5GZ. UK**

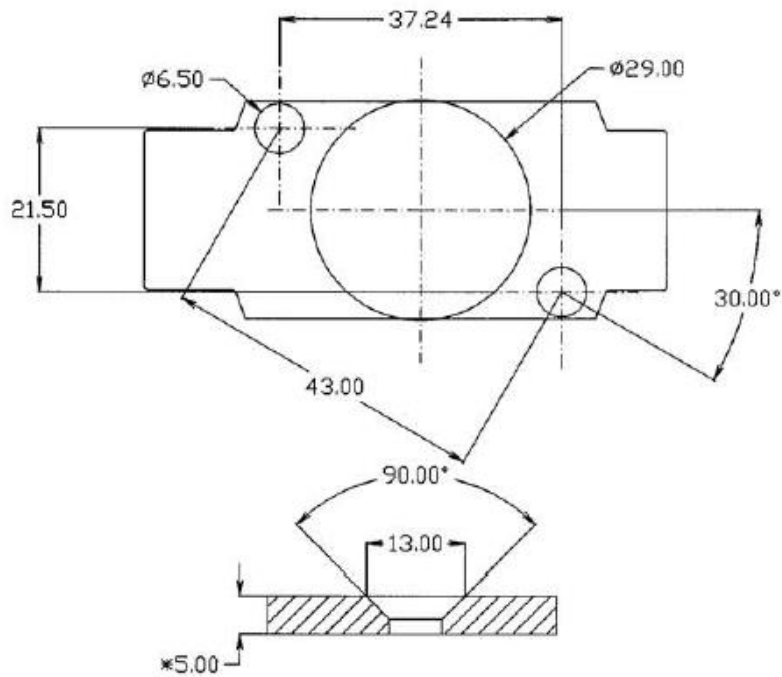
**Tel. +44(0)2382 358111**

Email: [info@undersea-centre.com](mailto:info@undersea-centre.com)

Web: [www.undersea-centre.com](http://www.undersea-centre.com)

# Drilling Template

This is a full-size template to assist you in drilling the 2 x 6.5mm fixing holes for mounting the 6000-PM or 6000-PMO valves to a panel. It is important that the panel should be at least 5mm thick so that you can drill the counter sunk holes as shown below. This is important so that the screw heads are flush with the panels front to prevent damage to your hand when operating the valve



\* Minimum recommended panel thickness

