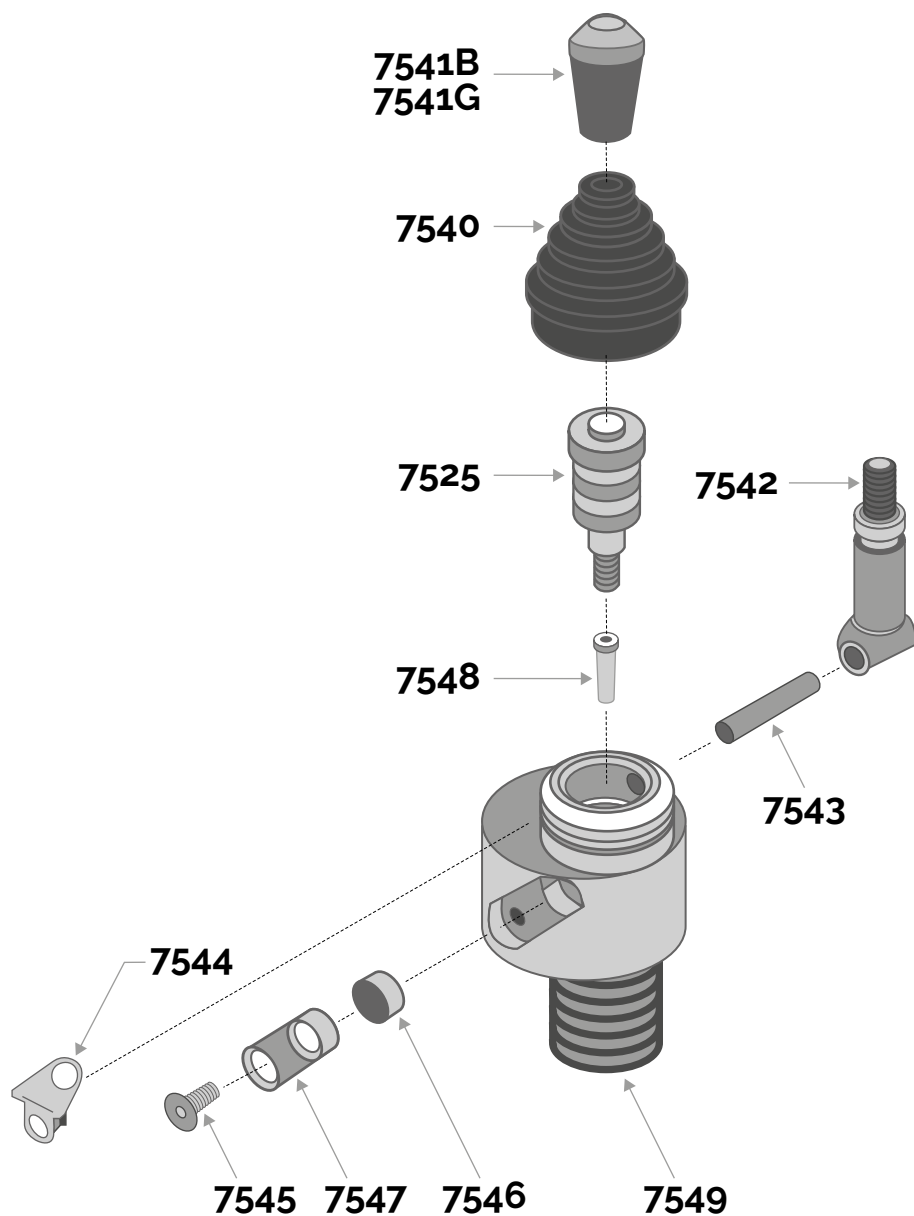




Undersea Centre Ltd
SERVING THE DIVING INDUSTRY SINCE 1974

Unit 3, The Crosshouse Centre,
Crosshouse Road,
Southampton SO14 5GZ
T: 02382 358 111
E: info@undersea-centre.com
W: undersea-centre.com



7501 and 7506 Lever Valves			
Part number	Part	Material	Quantity
7549	Valve body	Brass nickel plated	1
7547	Exhaust filter retainer	E335+C chrome plated	1
7546	Exhaust filter	MS58	1
7541 B	Knob black	POM	1
7541 G	Knob green	POM	1
7530	Service tool	Stainless steel	1
7540	Rubber bellows	Hypalon	1
7545	Retaining screw	Stainless steel	1
7544	Lever spring	Stainless steel	1
7543	Lever pin	Stainless steel	1
7542	Lever	Brass nickel plated	1
7548	Inlet filter	MS58	1
7525	Service kit full flow		1
7526	Service kit diameter 0.70mm		1
7527	Service kit diameter 0.50mm		1
7528	Service kit diameter 0.030mm		1

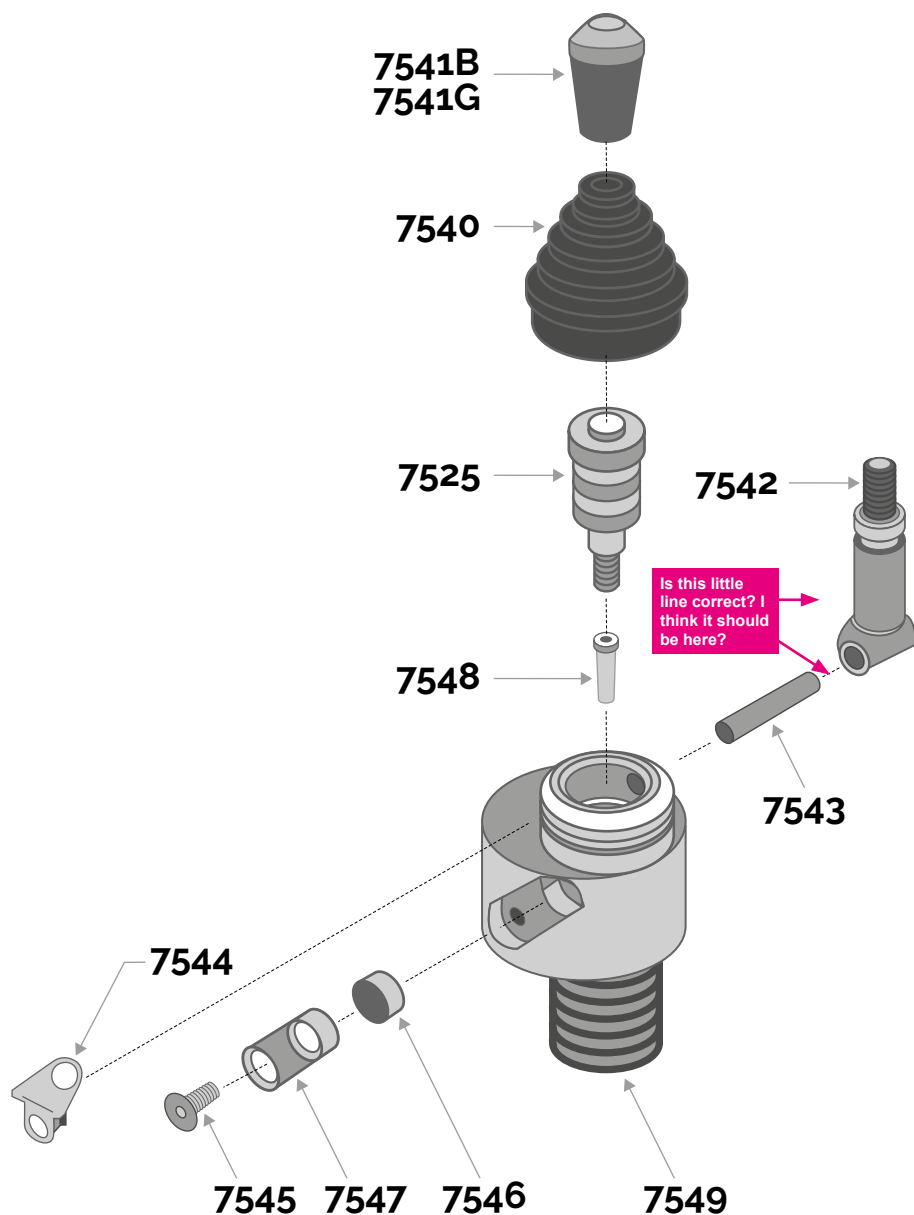
Drawn November 2014
For illustration purposes only, drawings are not to scale.

Service instructions overleaf



Undersea Centre Ltd
SERVING THE DIVING INDUSTRY SINCE 1974

Unit 3, The Crosshouse Centre,
Crosshouse Road,
Southampton SO14 5GZ
T: 02382 358 111
E: info@undersea-centre.com
W: undersea-centre.com



Service instructions for the 7501 and 7506 lever valves

1. Unscrew lever knob.
2. Remove rubber cover with care.
3. Now remove the pin with care using the service tool. Push out from spring washer side.
4. With care remove lever and spring noting which face is touching the plunger. This is very important.
5. Now unscrew and remove cartridge complete using the service tool, noting how each part fits.
6. The stainless steel plunger needs to be removed and re-greased so that valve bleeds properly.
7. If the valve is not bleeding completely then almost certainly the above is causing the problem.
8. Fit the cartridge onto the tool including the pin seat and spring then invert valve to screw cartridge into the body. Do not over tighten. Before fitting the lever put a good amount of silicone grease on the plunger pin.
9. Now replace the lever with the large flat face against the pin then fit the spring washer* lining up the holes with care. The pin should be re-inserted from the spring washer side. Check lever movement.
10. Now replace rubber ensuring the top and bottom fit into the grooves.
11. Screw lever knob back in place. Do not over tighten.

If you have any questions, please contact us.

*The 'Dimple' in the spring should face the lever.

Drawn November 2014

For illustration purposes only, drawings are not to scale.