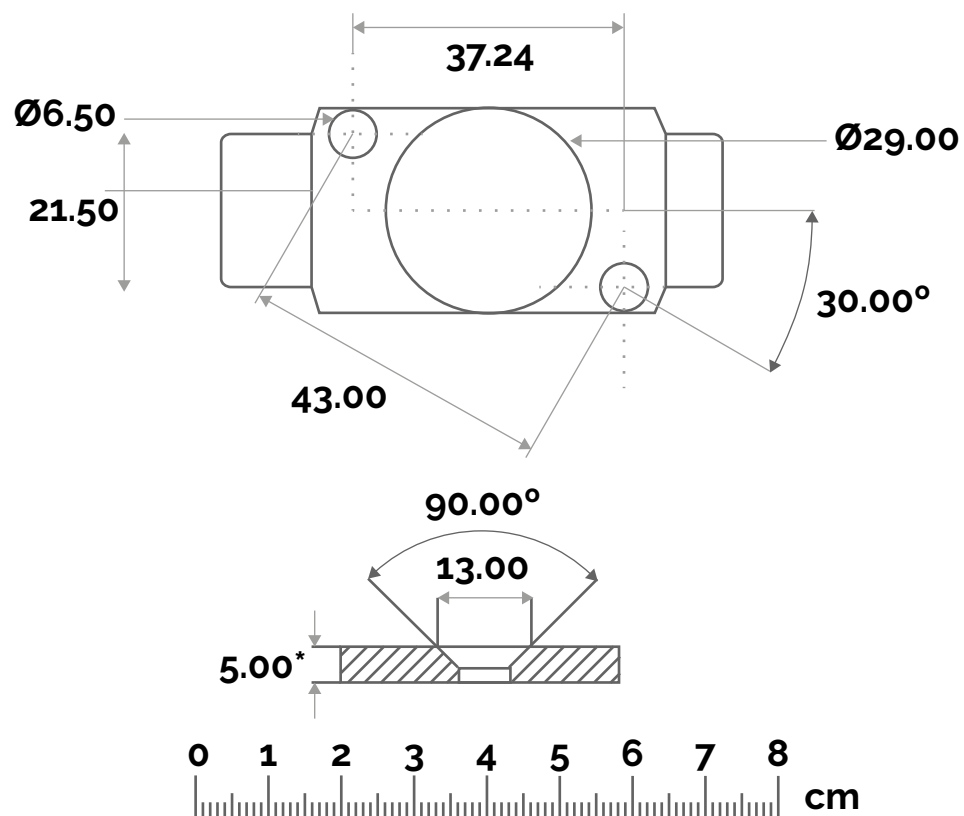




**Undersea Centre Ltd**  
SERVING THE DIVING INDUSTRY SINCE 1974

Unit 3, The Crosshouse Centre,  
Crosshouse Road,  
Southampton SO14 5GZ  
T: 02382 358 111  
E: [info@undersea-centre.com](mailto:info@undersea-centre.com)  
W: [undersea-centre.com](http://undersea-centre.com)



**\*Minimum recommended panel thickness**

Drawn October 2016  
For illustration purposes only, drawings are not to scale.

### 6000PM and 6000PMO

This is a full-size template to assist you in drilling the 2x6.5mm fixing holes for mounting our 6000 PM and 6000 PMP valves to a panel. It is important that the panel should be at least 5mm thick so that you drill the counter sunk holes as shown below. This is important so that the screw heads are flush with the panel front to prevent damage to your hand opening and closing the valve.